

Dene Court, Jesmond Park East (M), NE7 7BZ

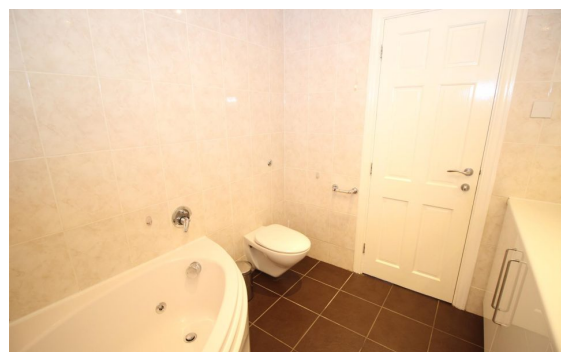
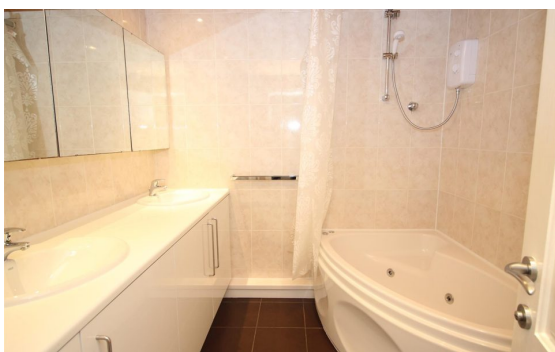
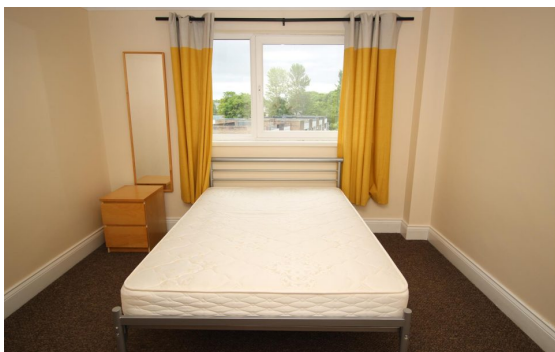


£0

Ref: 313

2 Bed Apartment for sale

EPC Rating:



Property Information:

*** TWO DOUBLE BEDROOMS - NEW FITTED KITCHEN - PARKING SPACE - ELEVATOR & STAIR ACCESS - SUPERB LOCATION! ***

A magnificent fourth-floor two-bedroom apartment, nestled in the highly sought-after area of Jesmond Park.

Step into a world of refined elegance as you enter this spacious and meticulously designed property.

A brand new stylish fitted kitchen awaits, complete with appliances, The living room boasts large windows that flood the space with natural light, offering stunning panoramic views that will leave you in awe.

Unwind in the comfort of two generous double bedrooms, with the master bedroom featuring a built-in wardrobe, providing ample storage for your belongings.

The family bathroom is a haven of relaxation, featuring a large corner bath, a shower over it, and his and hers sinks.

Experience the utmost convenience and security with the lift, secure intercom entry system, and underfloor heating. Embrace the comfort of double glazing throughout the apartment, creating a serene and energy-efficient environment. Off-street parking ensures your vehicle is safe and easily accessible.

Nestled on the edge of Jesmond Dene, you'll have the pleasure of being within walking distance of Chillingham Road, Osborne Road, and Jesmond Metro Station. Immerse yourself in a wealth of exceptional local amenities and enjoy seamless transport links to all areas of the city, allowing you to explore and embrace the vibrant urban lifestyle.

Offered fully furnished, this property is an absolute MUST VIEW for those seeking the pinnacle of luxurious living. Don't miss out on the opportunity to call this exquisite penthouse retreat your own.

Arrange your viewing today!