

Helmsley Road, Sandyford, NE2 1RE

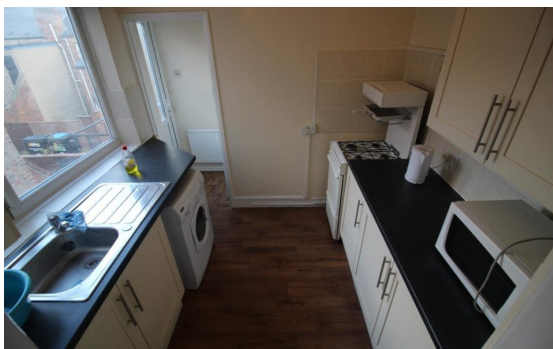


£0

Ref: 3947

3 Bed Flat for sale

EPC Rating:



Property Information:

*** THREE DOUBLE BEDROOMS - £100PPW - GREAT LOCATION - LOW DEPOSIT ***

Fully furnished three bedroom, first floor flat in the popular student area of Sandyford.

This property comprises a lounge, fully fitted kitchen, three double bedrooms and a bathroom, with shower over bath.

The property is ideally located within walking distance of the City Centre, both Universities, Osborne Road and Jesmond Metro Station. Offered on a furnished basis with a private rear yard, the property is a must view!