

Jenifer Grove, High Heaton, NE7 7QT

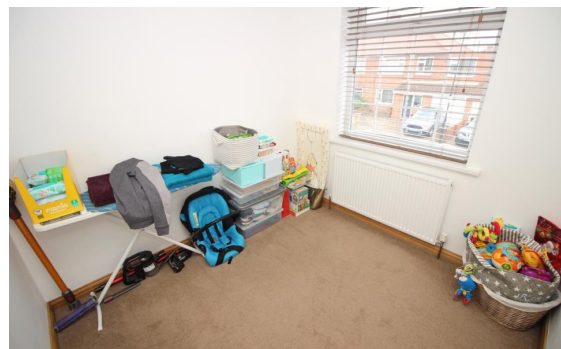
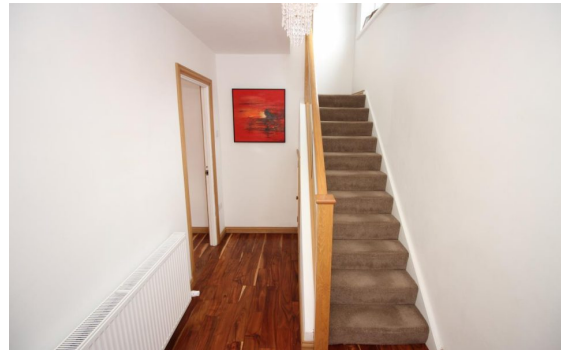


£0

Ref: 4668

3 Bed Semi-Detached House for sale

EPC Rating:



Property Information:

*** CLOSE TO FREEMAN HOSPITAL - FAMILY HOME - PRIVATE PARKING - AVAILABLE NOW ***

A beautifully presented, modern three bedroom semi-detached house located in the sought after location of Jenifer Grove, High Heaton.

Briefly comprising - inviting hallway, wood floors throughout, open plan lounge/diner and modern fitted kitchen with branded integrated appliances, including dishwasher and fridge freezer.

To the first floor there are three double bedrooms and family bathroom with bath and shower cubicle and heated towel rail.

A prime central location for families, with nearby local parks & schools; Paddy Freeman Park, Heaton Manor & Cragside Primary Schools and a stones throw from the Freeman Hospital.