

Queens Terrace, Jesmond, NE2 2PJ

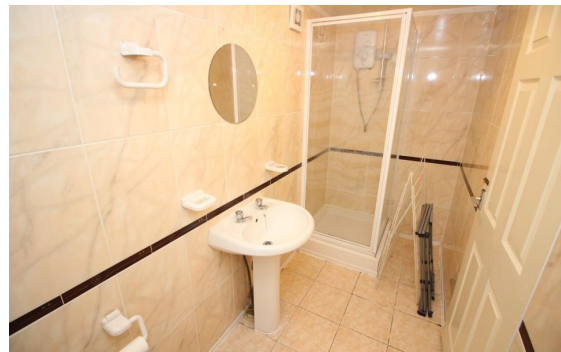


£0

Ref: 3941

8 Bed Terraced House for sale

EPC Rating:



## Property Information:

\*\*\* EIGHT DOUBLE BEDROOMS - AVAILABLE AUGUST 2023 - £115PPPW \*\*\*

This fantastic eight bedroom terraced house is located on the ever popular Queen's Terrace in Jesmond.

The property comprises spacious lounge, modern kitchen-diner, eight generous bedrooms, bathroom with shower over bath, two separate shower rooms and a private rear yard, with parking.

The property is ideally located within walking distance of Osborne Road, West Jesmond Metro Station, both Universities and great local amenities.

The property is offered on a furnished basis and is a must view!