

Shortridge Terrace, Jesmond, NE2 2JE

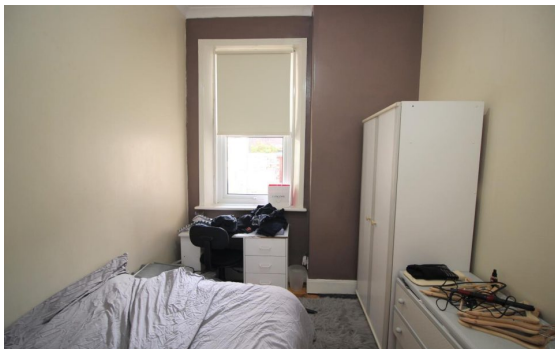
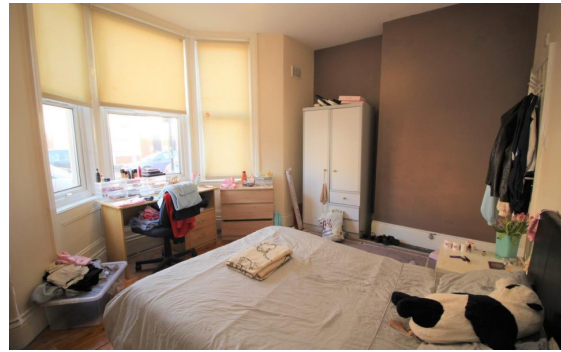


£0

Ref: 4937

3 Bed Flat for sale

EPC Rating:



## Property Information:

\*\*\* THREE DOUBLE BEDROOMS - AVAILABLE JULY 2023 - £125 PPPW \*\*\*

This three bed ground floor flat on Shortridge Terrace is located in a very popular area of Jesmond.

The property comprises a lounge, kitchen with fitted units, three double bedrooms, bathroom, with shower over bath, and private rear yard.

The property is ideally located close to Jesmond Dene, great local amenities and is within walking distance of Jesmond Metro Station and the City Centre.

Offered fully furnished the property is a must view!