

St Georges Terrace, Jesmond (M), NE2 2DL

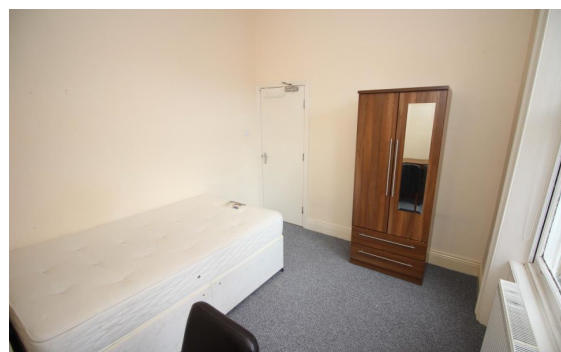
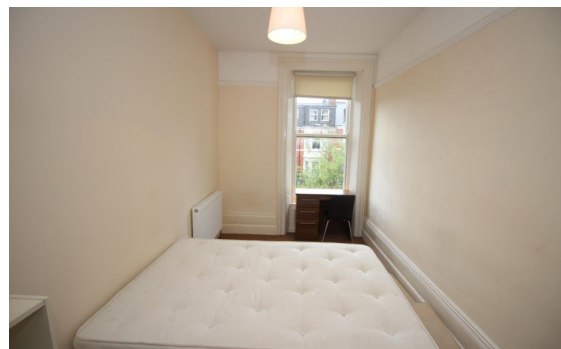


£0

Ref: 162

3 Bed Flat for sale

EPC Rating:



Property Information:

*** THREE BED UPPER APARTMENT - AVAILABLE SEPTEMBER 2024 - £130PPW ***

A fantastic three bedroom apartment located on the popular St George's Terrace in a feature terraced property. Briefly comprising: secure entry, good size lounge, three double bedrooms, kitchen and bathroom, with shower over bath. The property is ideally located next to Osborne Road and West Jesmond Metro Station, with great access to local amenities and within walking distance of both Universities.

Offered fully furnished the property is a must view!