

Mitford Hall Drive, Mitford, NE61 3PU

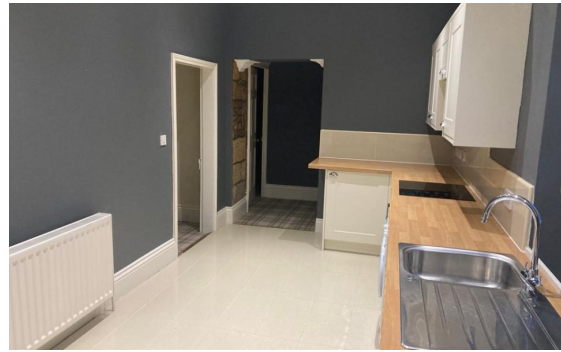


£0

Ref: 3788

2 Bed Bungalow for sale

EPC Rating:



Property Information:

*** TWO BEDROOMS - UNIQUE DETACHED COTTAGE - AVAILABLE END OF MARCH 2024 - BEAUTIFUL LOCATION ***

Bowson are pleased to welcome to the rental market this unique two-bedroom stone-built property nestled within the picturesque grounds of Mitford Hall. Located just three miles from Morpeth town centre, this property offers the perfect blend of peaceful countryside living and convenient access to amenities.

Briefly comprising, entrance hallway, generously sized lounge with a cosy log burning stove, two double bedrooms, both bedrooms are generously proportioned, offering ample space for storage. A spacious kitchen with white goods, including an integrated oven and hob and washing machine.

Externally , the property benefits from a garden and parking to the rear.

This property is offered on an unfurnished basis and benefits from Gas Central Heating:

Set within the grounds of Mitford Hall, this property offers a picturesque setting surrounded by lush greenery and scenic views. The rural location provides a peaceful retreat from the hustle and bustle of city life while remaining just a short distance from Morpeth town centre, and access to the A1 North & South.

Book your viewing today!