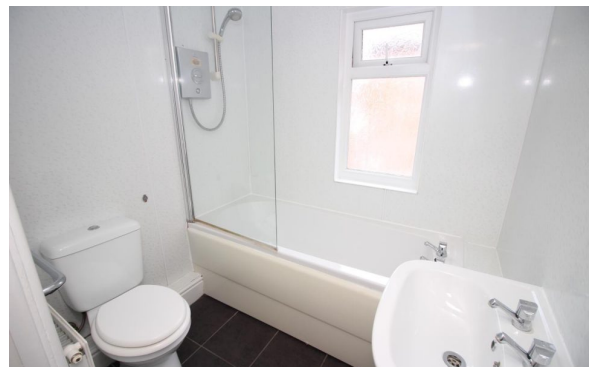


Thornleigh Road, Jesmond, NE2 3ET



£0

Ref: 4563

6 Bed Maisonette for sale

EPC Rating:



Property Information:

*** £112PPPW - AVAILABLE JULY 2023 - SIX DOUBLE BEDROOMS - TWO LOUNGE AREAS - PARKING AT REAR ***

A fantastic six double bedroom upper maisonette with two bathrooms and two sitting rooms and separate W.C in the heart of Jesmond.

Close to Osborne road, local shops and a short walk into the city centre to all universities with access to a Metro station

Comprising; entrance hallway, stairs to first floor, on the first floor there are; two double rooms, two good size lounges with an open plan modern kitchen with a bathroom with shower over bath to the rear and a private yard.

To the second floor; there are a further four double rooms and a shower room and separate W.C.

Benefiting from permit parking to the front and gas central heating through this property is a real must view!