

Bowsden Terrace, South Gosforth (M), NE3 1RX

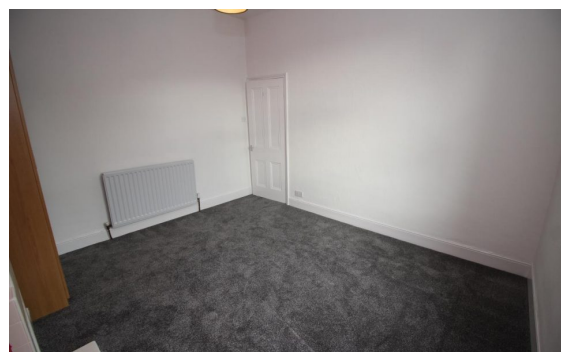
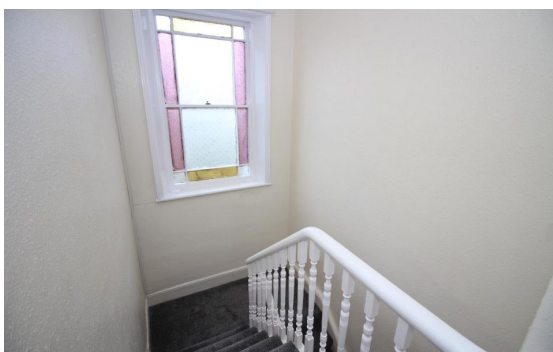


£0

Ref: 143

3 Bed Terraced House for sale

EPC Rating:



## Property Information:

\*\*\* MID TERRACED HOUSE - THREE BEDROOMS - PRIVATE REAR YARD - AVAILABLE MAY \*\*\*

A three bedroom terraced house in the heart of South Gosforth with fantastic access to the Metro, Freeman Hospital and HMRC.

The property comprises of a large living room with feature fire place, a spacious second lounge/diner, fitted kitchen with all white goods, a good sized bathroom with shower over bath and access to a private rear yard.

To the first floor there are three bedrooms, with feature fireplace in the master and additional landing storage.

The property is offered on an unfurnished basis making it a real must view!

Externally there is ample on street parking and a private garden to the rear, superbly located, arrange your viewing today!