

Valley View, Jesmond, NE2 2JS

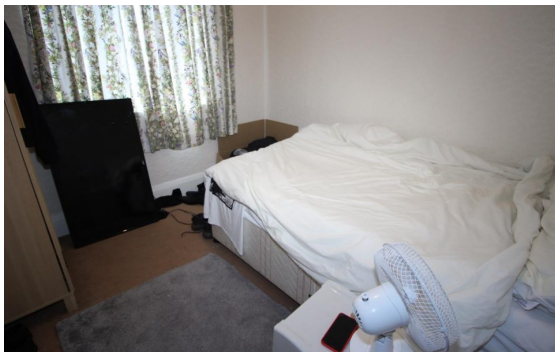


£0

Ref: 4851

3 Bed Flat for sale

EPC Rating:



Property Information:

*** THREE BEDROOMS - £110PPW - AVAILABLE SEPTEMBER 23 ***

A spacious three bed first floor flat in the popular area of Jesmond.

Comprising three double bedrooms, good size kitchen, lounge with 2 leather sofas, bathroom, with shower over bath. The property is ideally located next to Jesmond Dene and a short distance from Osborne Road, providing great access to transport links to all areas of the City and local amenities.

Offered fully furnished!